

CERTIFICATE OF LOCATION OF GOVERNMENT CORNER

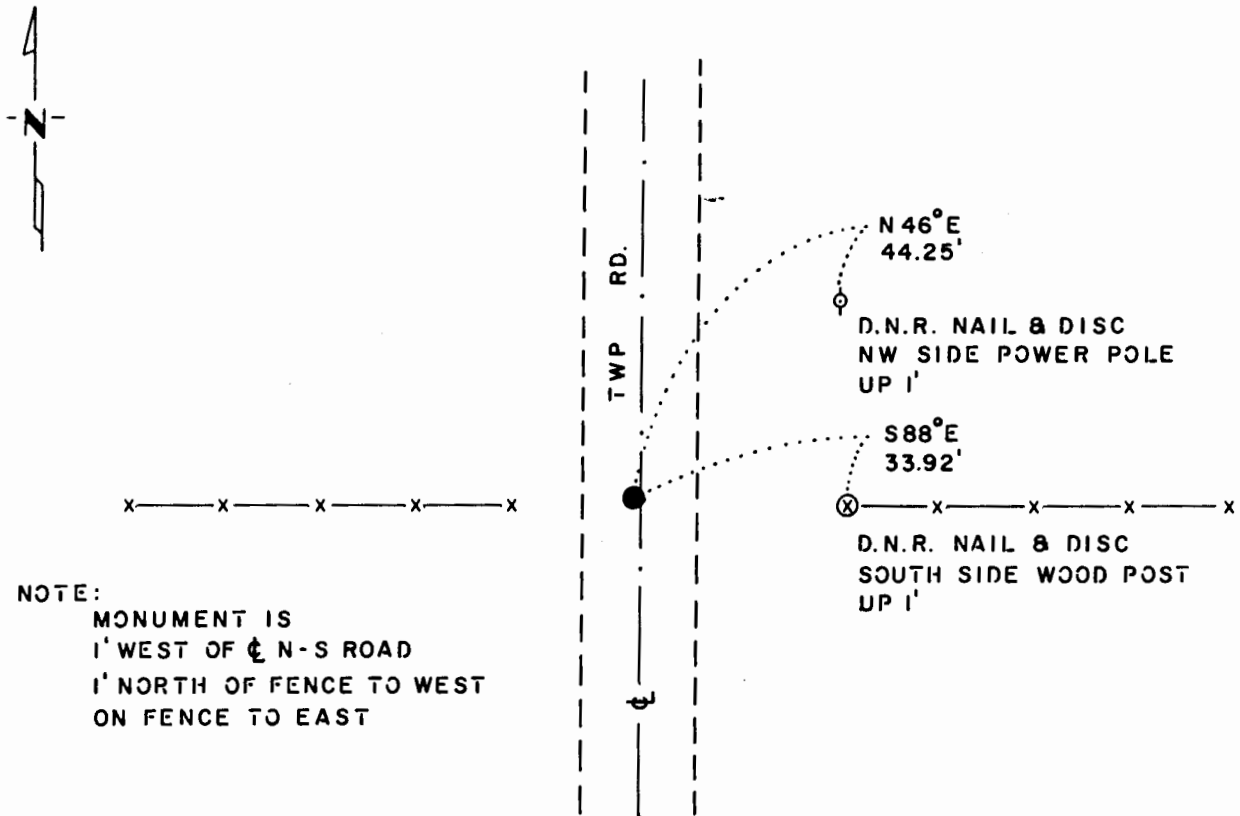
EAST QUARTER Corner of Section 21, Township 106 N., Range 42 W., 5th P.M.

STATE OF MINNESOTA, County of MURRAY

At the corner location shown on the sketch:

- On 11-3-83 found a 12" x 14" x 14" FIELD STONE, DOWN 15"
DATE
- left monument as found, lowered monument, removed monument (explain)
- On 11-3-83 placed a 1 1/4" x 1 1/4" x 9" PERFORATED STEEL TUBE WITH
DATE
ALUMINUM CAP STAMPED "D.N.R. SURVEY MARKER" OVER STONE, DOWN 0.3'

SKETCH OF REFERENCE TIES



NOTE:
 MONUMENT IS
 1' WEST OF ϵ N-S ROAD
 1' NORTH OF FENCE TO WEST
 ON FENCE TO EAST

BEARINGS OBSERVED WITH COMPASS

Statement of evidence relative to this corner location is on back of page. J. B. M. 4-2-84
G-1158

I hereby certify that this document and the data contained herein was prepared by me or under my direct supervision.

Lowell R. Pomeroy 6-16-86
SIGNATURE DATE

Registration No. 17005
 Land Surveyor, Professional Engineer
 County Surveyor, County Engineer

OFFICE OF THE COUNTY RECORDER
 County of _____

I hereby certify that this document was filed in the Co. Recorders office at _____ .M. on the _____ day of _____ A.D., 19 _____

County Recorder _____
 By _____, Deputy
 DOCUMENT NO. _____

East Quarter Corner Section 21, Township 106 North, Range 42 West

This corner was originally established by the U. S. General Land Office survey in 1866. The government notes show corner marked with a wood post set in mound of earth with pits and trench dug around the mound.

In November 1983, the DNR Bureau of Engineering contacted the Murray County Offices of the Recorder and Highway Engineer for corner information.

The following information was obtained from the County Recorder's Office: Surveyor's Record Book A, on Page 229 contains a survey by J. W. Woolstencraft, dated November 20, 1912. Survey shows corner as a stone in road, labeled as a government corner. This information is also contained in a Surveyor's Record Book in the Highway Engineer's Office.

On November 3, 1983, the DNR Bureau of Engineering hired a backhoe operated by Johnson Tiling of Lake Wilson to dig for evidence of this corner. Encountered natural ground down 12" and found a 12" by 12" by 14" field stone down 15". Left stone as found and set a 1" square by 8" channel pipe lying flat on north side of stone.

Accept the found stone as the location of the corner.

Traverse information is available from the DNR Bureau of Engineering.

Shab/cors